



Cover photo:

Slaked, pumped or injected, lime is most often used in liquid form, called slurry.

Lime slurry is one of the many user-friendly options that make-up our solutions-oriented portfolio of products designed to exceed customer expectations.

OVERVIEW

OVERVIEW

At Chemical Lime Company, we see the world of business as changing. No longer do we simply deliver lime or lime-based products—
we deliver solutions.

Three primary elements of our organization help us meet customer needs:

- High-quality, technologically advanced products
- A strong resource base of quarries, processing facilities and delivery systems
- Talented, customer-oriented professionals

MARKETS

**CLC serves the unique requirements of our customers
in a wide range of markets including:**

- Mining and Ore Processing
- Industrial Manufacturing—pulp/paper, chemical, food and nonferrous metals processing
- Steel
- Construction—highway and building
- Environmental—water, wastewater, flue gas desulfurization (FGD), remediation and solid waste

Over the years, we have pioneered systems, custom-developed products and led in the usage of new technologies to address the challenges of these diverse market segments. The results of these efforts are patented or proprietary technologies and products that exceed customer expectations, often improving the quality of the product or process in which they are used.

Keeping each customer's requirement in mind, we offer "one-stop shopping" and turnkey solutions to those requiring specialized equipment. From permanent storage facilities located at our customer's site to our PORTA BATCH® mobile hot lime slurry production system, CLC provides customers with workable solutions.

**Lime stabilizes
roadbeds,
cost-effectively
improving
the quality and
life of roads.**



**Mining and Ore Processing**

Flotation processing of copper, zinc and molybdenum ores, pH control in the extraction of gold, recausticizing liquors in alumina processing and the remediation of mine tailings and acidic process waters all require lime. CLC responds to the needs of the mining industry by supplying high-quality lime products from our processing and terminal facilities located throughout North America.

Industrial Manufacturing

Partnering with leading industrial manufacturers has resulted in the enhanced use of lime in many products and processes. Kraft pulp producers use quicklime for regenerating caustic soda. Lime also is used as the raw material for precipitated calcium carbonate (PCC) that is used as a filler in alkaline paper making. Chemical companies and other manufacturers faced with industrial effluent or wastewater treatment issues regularly work with a number of our lime-based products to meet stringent environmental criteria.

**Lime controls
pulp pH in
flotation cells
to concentrate
copper ore
minerals.**

Steel

To meet the strict requirements of today's steel makers, we have developed custom-blended, lime-based products. Lime-magnesium blends help extend furnace and ladle refractory life, maintaining accurate levels of calcium to effectively remove sulfur and phosphorous from the molten steel. Our sized and screened products are used to further refine steel at the ladle metallurgy station (LMS) and by ductile iron foundries to replace more expensive and potentially dangerous reagents.

MARKETS

Construction

Working with the construction industry, we developed products to improve the quality and life of pavements at reduced costs. Through the use of our PORTA BATCH® mobile hot lime slurry production system, pavement subgrades are more quickly and easily stabilized. PORTA BATCH® technology also facilitates the recycling of asphalt surfaces, saving additional time and money. Traditional products such as quicklime and hydrated lime are readily available from our network of terminals.

Architects, engineers and contractors depend on Type S Lime in mortar for superior bond strength, especially in areas of high seismic hazard or risk or strong winds. Our expertise in manufacturing enables the development of an exceptional crystalline structure that promotes bond strength as well as enhances the product's workability and durability.

Environmental

Increased environmental concern has spawned new laws and regulations from both our nation's Congress and states' legislatures. To assist wastewater treatment plants in meeting the requirements of the Code of Federal Regulations (CFR) Part 503 for beneficial reuse of residual treated wastes, we developed low-cost, packaged solutions that enable them to meet either Class A or B criteria.



The 1994 Northridge, California earthquake, about five miles from this upscale store, was no match for our Type S Lime.

CLC provides practical, turnkey solutions that meet state and federal biosolids regulations to municipal wastewater treatment facilities.

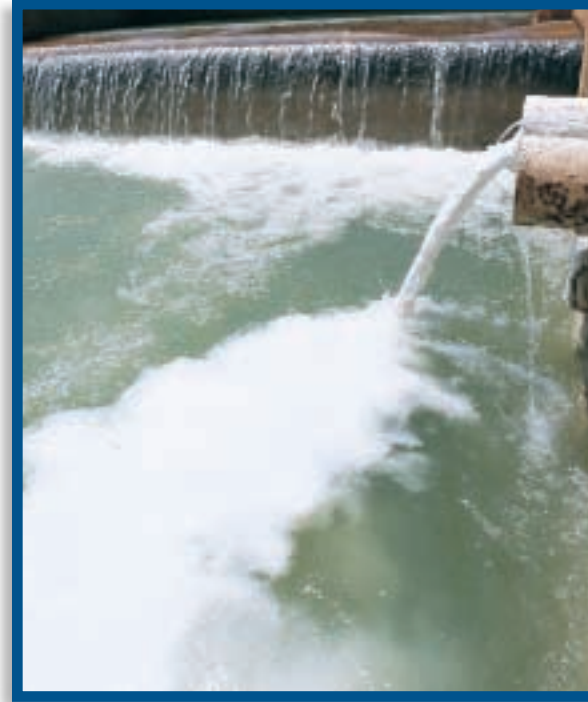
**CLC supplies the
specialty
products needed
to meet the strict
metallurgical
requirements of
steel making.**



Environmental

To assist industries requiring lime for flue gas desulfurization to meet the Clean Air Act Amendments of 1990, we formulated MAG-ON-DEMAND®—a high-quality quicklime product with a controlled, variable magnesium oxide content. Our technical teams work with system designers and operators to achieve the correct blend required for each location, providing enhanced FGD performance and lower costs.

New requirements for the reduction of lead and copper levels can be met by water plants with lime. When using lime in slurry form, the benefits are multiplied by the ease of use and dosage accuracy. A variety of innovative slurry products are available that are designed for a host of applications. Lime is also a widely used alkali for neutralizing industrial waste streams and as a reagent for environmental remediation projects.



CLC's lime is used for softening, flocculation and pH adjustment of drinking water.

MAG-ON-DEMAND® enhances the ability of utilities to comply with the 1990 Clean Air Act Amendments.



RESOURCES

Over the years, we have expanded our facilities to meet the changing needs of our customers. Our continuing commitment to serving our markets is reflected in our significant investment in:

- Large quarry reserves of limestone
- Computer-controlled processing facilities and statistical-based quality control
- A broad network of terminals
- Management Information Systems (MIS) and Local and Wide Area Networks
- State-of-the-art R&D laboratories

**State-of-the-art
kilns at CLC
facilities enable
us to produce
high-quality
products based
on customer
requirements.**



RESOURCES

Our network of distribution facilities spans North America.



CLC Headquarters in Fort Worth, Texas.

RESOURCES

The development of our resource base has been driven by our desire to improve the availability of our products and services. We have added reserves and facilities, expanded our scope in terms of product mix, markets served and customers reached, while achieving our high standards of responsive service.

Research and Development

Research and development plays a key role at CLC. Technological solutions created or refined by our team of top-notch scientists include MAG-ON-DEMAND®, innovative roadbed stabilization processes, Recycled Asphalt Pavement (RAP), user-friendly slurry products and biosolids treatment options.

Outside the lab, we work closely with a variety of academic, governmental and professional organizations, including the Federal Highway Administration (FHA), Water Environment Federation (WEF), American Water Works Association (AWWA), American National Standards Institute (ANSI) and the International Conference of Building Officials, the organization that writes the Uniform Building Code (UBC).

Mineral Deposits

Our processing facilities receive a continuous supply of raw material from our many quarries. Located throughout North America, these active quarries provide feedstock for manufacturing high-quality lime products well into the 21st century. CLC also has acquired other strategically located reserves throughout North America.



Manufacturing and Distribution Facilities

CLC's facilities are designed for quality, high-volume processing of limestone into a wide range of products. Utilizing the latest in computer monitoring and automated process control technology, we produce consistent product quality with maximum productivity. In tandem with our manufacturing locations, our network of terminal facilities are strategically located for optimal coverage and ensure reliable, on-time shipments across North America.



Our talented R&D and technical support personnel ensure that compliance with customer criteria are met.



PEOPLE



People—Our Most Important Resource

While our products, mineral reserves and processing facilities represent significant assets, our most important resource is our people. Experienced, talented and solutions-oriented, Chemical Lime people understand that customers are the foundation of our business. Providing exceptional service to those customers adds to the strength of that foundation.

CLC's goal is to consistently build on our relationship with our customers—to better serve our customers' needs, to assist in their growth and productivity, to anticipate potential problems and provide solutions in advance. It is only through a high-caliber, trained and motivated workforce that we can operate our business in this manner.

Our commitment to development extends to our people. CLC makes a significant investment in the continuing education and professional development of its employees. The result of this investment is seen in our consistently improving levels of productivity and customer satisfaction.

Quality products, a strong resource base and talented professionals—
these factors all play a key role at Chemical Lime Company.

But the most important factor is the success our customers achieve as a
result of our products and services.

Chemical Lime Company does a great deal more than supply lime.

We deliver solutions.

MAJOR FACILITIES

MAJOR FACILITIES

ALABAMA

Alabaster Plant
Alabaster, AL
(205) 665-5000
(205) 663-4070 (Fax)

Montevallo Plant
Montevallo, AL
(205) 665-5000
(205) 665-5046 (Fax)
(800) 388-8550

O'Neal Plant
Calera, AL
(205) 665-1251
(205) 663-4551 (fax)

ARIZONA

Douglas Plant
Douglas, AZ
(520) 364-2429
(520) 364-2706 (Fax)

Nelson Plant
Peach Springs, AZ
(520) 769-2271
(520) 769-2305 (Fax)

CALIFORNIA

City of Industry Terminal
City of Industry, CA
(626) 336-4578
(626) 369-2118 (Fax)
(800) 243-6787

Natividad Plant
Salinas, CA
(831) 449-9117
(831) 443-5599 (Fax)
(800) 369-8989

Stockton Terminal
Stockton, CA
(209) 982-4112
(209) 982-1485 (Fax)

COLORADO

Colorado Springs Terminal
Colorado Springs, CO
Contact the Scottsdale, AZ
Sales Office (800) 978-0325

Denver Terminal
Denver, CO
(303) 287-9606
(303) 297-0493 (Fax)

FLORIDA

Brooksville Plant
Brooksville, Florida
(352) 799-1352
(352) 979-0045 (Fax)

Nichols Terminal
Nichols, FL
(941) 425-0596
(863) 425-5657 (Fax at
Terminal)

Pompano Beach Terminal
Fort Lauderdale, FL
(954) 975-0201
(954) 975-9876 (Fax)

IDAHO

Tenmile Plant
Bancroft, ID
(208) 648-7385
(208) 648-7387 (Fax)

KENTUCKY

Owensboro Terminal
Owensboro, KY
(304) 455-5216

LOUISIANA

Baton Rouge Terminal
Port Allen, LA
(225) 387-3051
(225) 336-9849 (Fax)
(800) 247-9996

MISSOURI

Holland Terminal
Holland, MO
(573) 695-4372

Ste. Genevieve Plant
Ste. Genevieve, MO
(573) 883-3001
(573) 883-3029 (Fax)
(800) 393-9889

NEW MEXICO

Belen Plant
Belen, NM
(505) 864-9110
(505) 864-3542 (Fax)

Gallup Terminal
Gallup, NM
(505) 863-9011

NEVADA

Apex Plant
N. Las Vegas, NV
(702) 651-6311
(702) 643-9517 (Fax)
(800) 283-4880

Henderson Plant
Henderson, NV
(702) 565-8991
(702) 565-5902 (Fax)
(800) 374-2907

NORTH CAROLINA

Charlotte Terminal
Charlotte, NC
Contact the Kimballton,
Ripplemead, VA Office at
(800) 423-7606

SOUTH CAROLINA

Charleston Plant
Charleston, SC
(843) 843-965-5284
(843) 965-5286 (Fax)

St. Matthew's Terminal
St. Matthews, SC
(803) 874-4297
(803) 655-5060

TEXAS

Arcola Terminal
Arcola, TX
(281) 431-0575
(281) 431-4162 (Fax)

Clifton Plant
Clifton, TX
(817) 675-8660
(817) 675-8871 (Fax)
(800) 456-3286

Fort Worth Corporate
Headquarters
3700 Hulen Street
Fort Worth, TX 76107
(817) 732-8164
(817) 732-8564 (Fax)
(800) 365-6724

Hurst Terminal
Hurst, TX
(817) 268-2216
(817) 282-1776 (Fax)
(800) 933-2216

LaPorte Terminal
LaPorte, TX
(281) 471-4500
(281) 867-1179 (Dispatch)
(281) 471-0817 (Sales)

Marble Falls Plant
Marble Falls, TX
(512) 756-8668
(512) 756-8039 (Fax)

New Braunfels Plant
New Braunfels, TX
(830) 625-2327
(830) 625-0552 (Fax)

Port Arthur Terminal
Port Arthur, TX
Contact the LaPorte, TX
Office at (281) 471-4500

Valley Terminal
LaFeria, TX
(956) 514-9001
(956) 512-9034 (Fax)

UTAH

Grantsville Plant
Grantsville, UT
(435) 884-3972
(435) 884-6556 (Fax)

VIRGINIA

Kimballton Plant
Ripplemead, VA
(540) 626-7163
(540) 626-7109 (Fax)
(800) 423-7606

Petersburg Terminal
Petersburg, VA
Contact the Kimballton,
Ripplemead, VA Office at
(800) 423-7606

WEST VIRGINIA

Brooklyn Junction Terminal
New Martinsville, WV
(304) 455-5216
(304) 455-5303 (Fax)

INTERNATIONAL

CANADA

Langley Plant
Langley, British Columbia
(604) 888-2575 (Sales)
(604) 888-4238 (Fax)

DOMINICAN REPUBLIC

Cabo Rojo Quarry
Santo Domingo, Dominican
Republic
(809) 682-3111
(809) 689-7297

MEXICO

Calera Fernandez, S.A. de
C.V., Huescalapa, Jalisco
Mexico
Contact the Fort Worth, TX
Corporate Office at
(800) 365-6724

Calider Monterrey
Monterrey, Mexico
Contact the Fort Worth, TX
Corporate Office at
(800) 365-6724

Please visit our website:
www.chemicallime.com

Email address:
solution@chemicallime.com

